

HOLES PLOTTED

TOTAL 2

TS007 TS19-009

TOPOGRAPHY

MacPass2019LIDAR\_DEM1m.GRD

PROFILES

	L/R	COL
Zn_Best_ppm	L	
Pb_Best_ppm	L	

ROCK CODES

	PAT	LABEL	DESCRIPTION
Lith1		MDST	Mudstone
		CASE	Casing
		BMST	Black Mudstone
		LBSC	Laminated: barite-sphalerite-chert>>mudstone-galena
		COLL	Colluvium
		GOUG	Fault gouge

POSTED TEXT

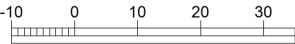
	L/R	TEXT	ITEMS
Lith1	R	-----	All

SECTION SPECS:

REF. PT.	E, N	441736 m	7004409 m
EXTENTS		375.8 m	259.5 m
SECTION TOP, BOT		1531 m	1271 m
TOLERANCE +/-		25 m	

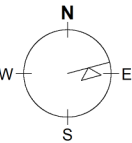
SCALE 1 : 1200

(m)



NAD83(CSRS)v7 / UTM zone 9N

AZIMUTH = 75°



Fireweed Zinc Ltd.  
Macmillan Pass  
Tom North Target  
Cross Section